

\$2,300 - #2406 -23 Sheppard Ave E, Toronto

MLS® #C4872974

\$2,300

2 Bedroom, 1.00 Bathroom,
Single Family

Willowdale East, Toronto, Ontario

Prime Location Closed To
Yonge/Sheppard/Bayview Subway; Minutes
To Hwy 401; Walk Distance To Restaurants
And Shops; Open Balcony; Indoor Pool,
Theatre Room, Business Centre, Guest Suite
& Visitor Parking; 24-Hr Concierge/Security****
EXTRAS **** Extras:All Elf, All Window
Coverings; Fridge, Stove, B/I Dishwasher, B/I
Microwave/Exhaust Combo, Stacked Washer
And Dryer; One Parking Included; Tenants
Needs To Pay For Water & Hydro (id:6289)

Essential Information

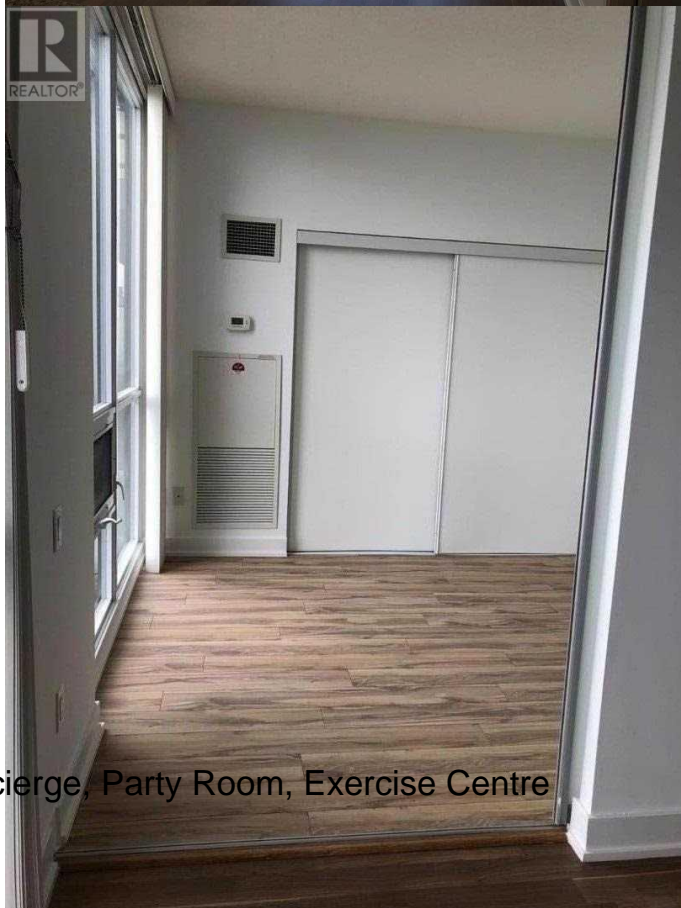
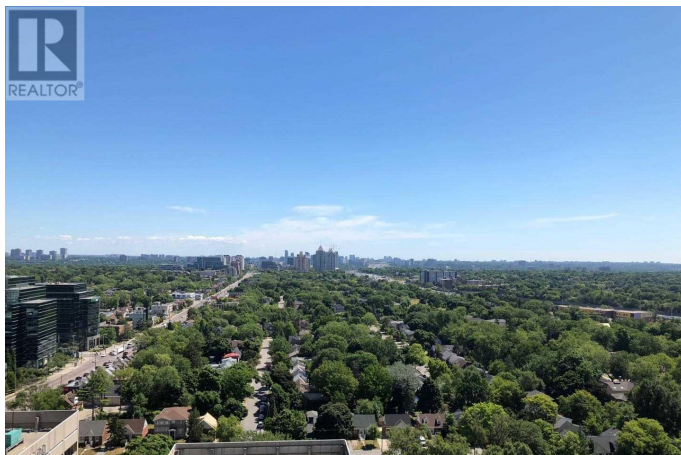
Listing #	C4872974
Price	\$2,300
Bedrooms	2
Bathrooms	1.00
Type	Single Family
Sub-Type	Condominium/Strata

Community Information

Address	#2406 -23 Sheppard Ave E
Subdivision	Willowdale East
City	Toronto
Province	Ontario
Postal Code	M2N0C8

Amenities

Amenities	Public Transit, Security/Concierge, Party Room, Exercise Centre
Features	Balcony



Parking Spaces	1
Parking	Underground, Visitor Parking
Has Pool	Yes
Pool	Indoor pool

Interior

Heating	Natural gas Forced air
Cooling	Central air conditioning

Exterior

Exterior	Concrete
----------	----------

Listing Details

Listing Office	HOMELIFE LANDMARK REALTY INC.
----------------	-------------------------------



The trademarks MLS®, Multiple Listing Service® and the associated logos are owned by The Canadian Real Estate Association (CREA) and identify the quality of services provided by real estate professionals who are members of CREA. REALTOR®. Member of CREA and more.