

\$ - #a -215 Dundas St E, Whitby

MLS® #E4892485

\$

0 Bedroom, 0.00 Bathroom, 2,141 sqft
Retail

Downtown Whitby, Whitby, Ontario

Downtown Whitby Location On Busy Dundas East (Hwy 2). Lots Of Ability To Be Creative Here With The Space, Could Be Used For Many Different Retail/Commercial Uses, Offices Or Personal Services. Two Large Open Areas With Other Back Rooms. Lots Of Traffic In This Area, Ability For Signage.**** EXTRAS **** Landlord Looking For Long Term Tenant. Walk To All Downtown Amenities, Right Beside Beer Store. Great Signage, Gas And Hydro Metered Separately. \$3550.49 Per Month Plus Hst (id:6289)

Essential Information

Listing #	E4892485
Bathrooms	0.00
Square Footage	2,141
Type	Retail

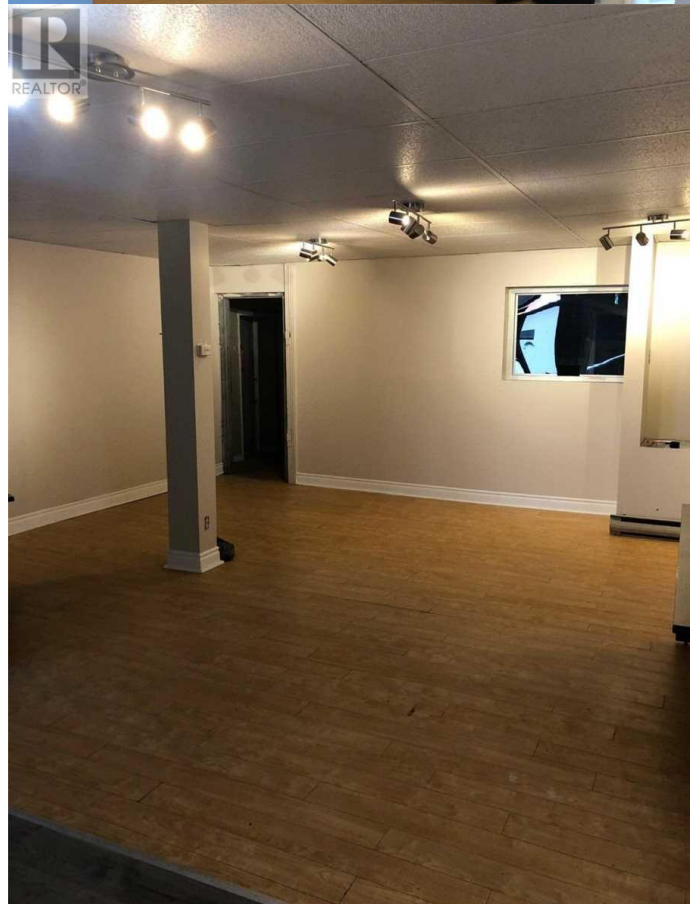
Community Information

Address	#a -215 Dundas St E
Subdivision	Downtown Whitby
City	Whitby
Province	Ontario
Postal Code	L1N2H9

Interior

Cooling	Fully air conditioned
---------	-----------------------

Listing Details



Listing Office

RE/MAX JAZZ INC.



The trademarks MLS®, Multiple Listing Service® and the associated logos are owned by The Canadian Real Estate Association (CREA) and identify the quality of services provided by real estate professionals who are members of CREA. REALTOR®. Member of CREA and more.