

\$399,900 - 0 Jim Kimmett Blvd, Greater Napanee

MLS® #K20003811

\$399,900

0 Bedroom, 0.00 Bathroom,
Vacant Land on 2.37 Acres

Greater Napanee, Greater Napanee, Ontario

Prime location on two different roadways! This is a perfect spot to build your next business venture, the lot boasts plenty of frontage on both County road 1 and Jim Kimmett blvd, with 2.37 acres of flat buildable land, the sky's the limit! Zoned Arterial Commercial (C2-20-H) , this lot lends itself to a variety of commercial establishments and has lot's of vehicle traffic! Don't miss out on this area of town, it's close to the 401, and is prime for development!
(id:6289)



Essential Information

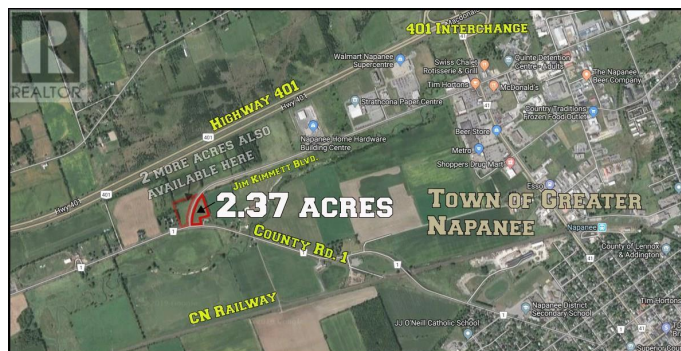
| | |
|-----------|-------------|
| Listing # | K20003811 |
| Price | \$399,900 |
| Bathrooms | 0.00 |
| Acres | 2.37 |
| Type | Vacant Land |
| Sub-Type | Freehold |

Community Information

| | |
|-------------|--------------------|
| Address | 0 Jim Kimmett Blvd |
| Subdivision | Greater Napanee |
| City | Greater Napanee |
| Province | Ontario |
| Postal Code | K7R3L1 |

Listing Details

Listing Office CENTURY 21-LANTHORN REAL ESTATE LTD., BROKERAGE



The trademarks MLS®, Multiple Listing Service® and the associated logos are owned by The Canadian Real Estate Association (CREA) and identify the quality of services provided by real estate professionals who are members of CREA. REALTOR®. Member of CREA and more.