

\$1,500,000 - 4911 Concession Road 7 Rd, Adjala-Tosorontio

MLS® #N4728309

\$1,500,000

0 Bedroom, 0.00 Bathroom,
Retail on 0.00 Acres

Rosemont, Adjala-Tosorontio, Ontario

Great Location With Excellent Highway Exposure! 2.54 Acres Of Employment/Commercial Land On The Edge Of Alliston. Located On The North/East Corner Of Concession Rd 7 And Hwy 89 Right Across From The Gmc Dealership! Close To ""Big Box"" Stores, Earl Rowe Park, Automotive Dealerships, Auto Parts Store, Etc!!!**** EXTRAS **** Zoned E-1 Employment Land. Some Permitted Uses Include: Auction Facility, Self Storage Facility, Welding Shop, Service Station, Parking Lot, Bus/Trucking Operation, Machinery/Equipment Sales And Service Establishment, Vet Clinic, And More! (id:6289)

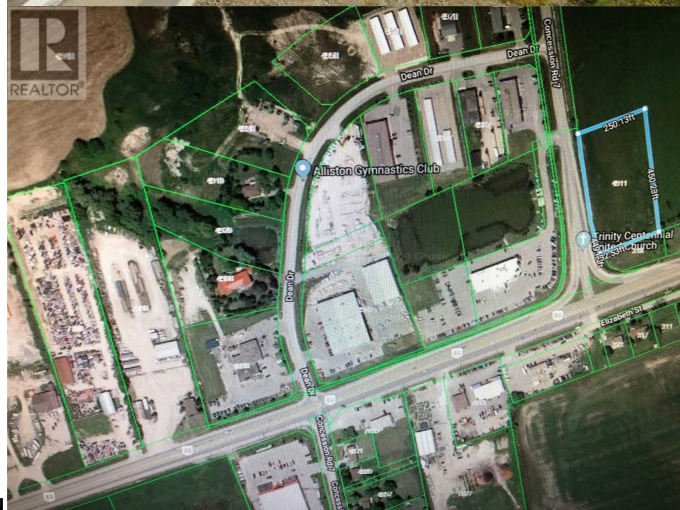
Essential Information

Listing #	N4728309
Price	\$1,500,000
Bathrooms	0.00
Acres	0.00
Type	Retail

Community Information

Address	4911 Concession Road 7 Rd
Subdivision	Rosemont
City	Adjala-Tosorontio
Province	Ontario
Postal Code	L9R1V4

Amenities



Amenities Highway

Exterior

Lot Description 449.4 x 250.13 Acre ; 250.13' X 449.40' X 232.53' X 450.23'

Listing Details

Listing Office RE/MAX HALLMARK CHAY REALTY



The trademarks MLS®, Multiple Listing Service® and the associated logos are owned by The Canadian Real Estate Association (CREA) and identify the quality of services provided by real estate professionals who are members of CREA. REALTOR®. Member of CREA and more.